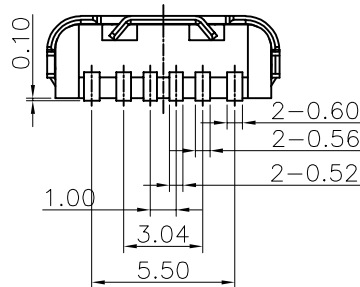
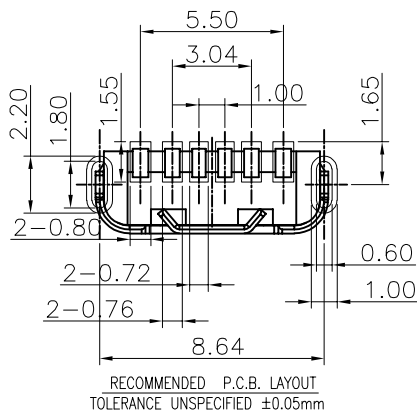
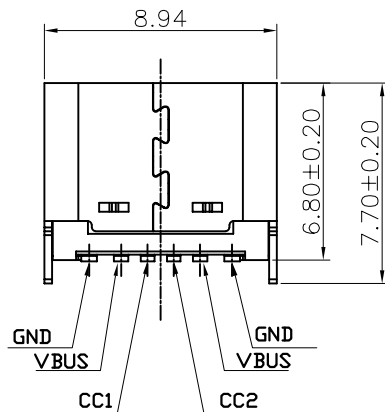
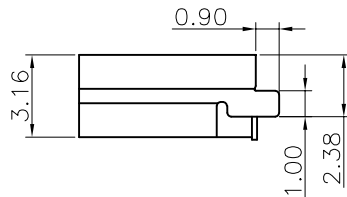
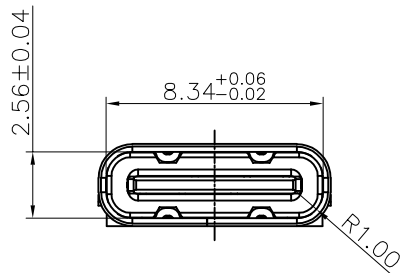
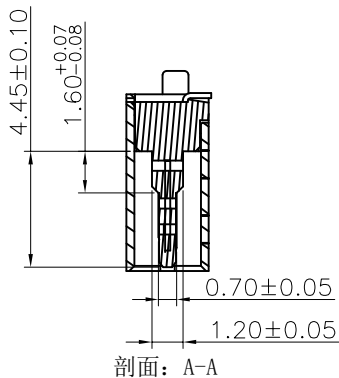
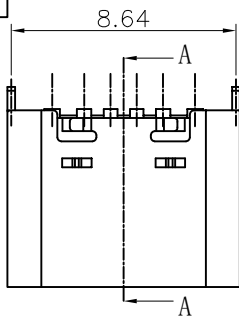
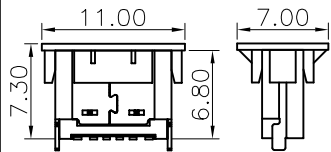


带CAP示意图



NOTES:

1.MATERIAL:

MOLDING: LCP UL94 V-0
 CONTACT: COPPER ALLOY.
 GOLD PLATED ON CONTACT AREA,
 30u" NICKEL PLATING OVER ALL.
 SHELL: STAINLESS STEEL, T=0.30±0.03mm
 30u" NICKEL PLATING OVER ALL.

2.MECHANICAL:

INSERTION: 5~20N.
 EXTRACTION: 8~20N AFTER TEST.

3.ELECTRICAL:

CURRENT: 3A FOR VBUS;
 1.25A FOR GND PIN.
 0.25A FOR OTHER.

VOLTAGE: 20 V MAX
 WITHSTANDING VOLTAGE: 100V AC R.M.S.
 CONTACT RESISTANCE: 40mΩ MAX.
 INSULATION RESISTANCE: 100MΩ MIN.

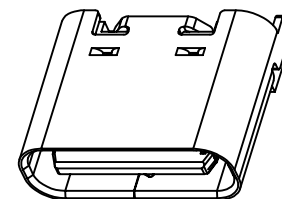
4.ENVIRONMENTAL

TEMPERATURE RANGE -25°C ~ +85°C

5. 尺寸标注事项:

图示有标示"XX"者为首样全检, 重点管控尺寸.

6. 产品符合RoHS标准



B12	GND
B9	VBUS
B5	CC2
A5	CC1
A9	VBUS
A12	GND
PIN	SIGNAL NAME

尺寸	允许公差
.X	±0.50
.X	±0.20
.XX	±0.15
.XXX	±0.10
角度	±1.00°

深圳市创勤科技有限公司
 SHENZHEN CHUANGQIN TECHNOLOGY CO., LTD.

图纸类型

图纸名称:

产品工程图

6Pin-TYPE C-L6.8-立贴

设计	LIN YUN	2019.09.24	产品料号	CQ045-TFLT0610502
----	---------	------------	------	-------------------

审核	ZHANG	2019.09.24	视图		版本号: A
----	-------	------------	----	--	--------